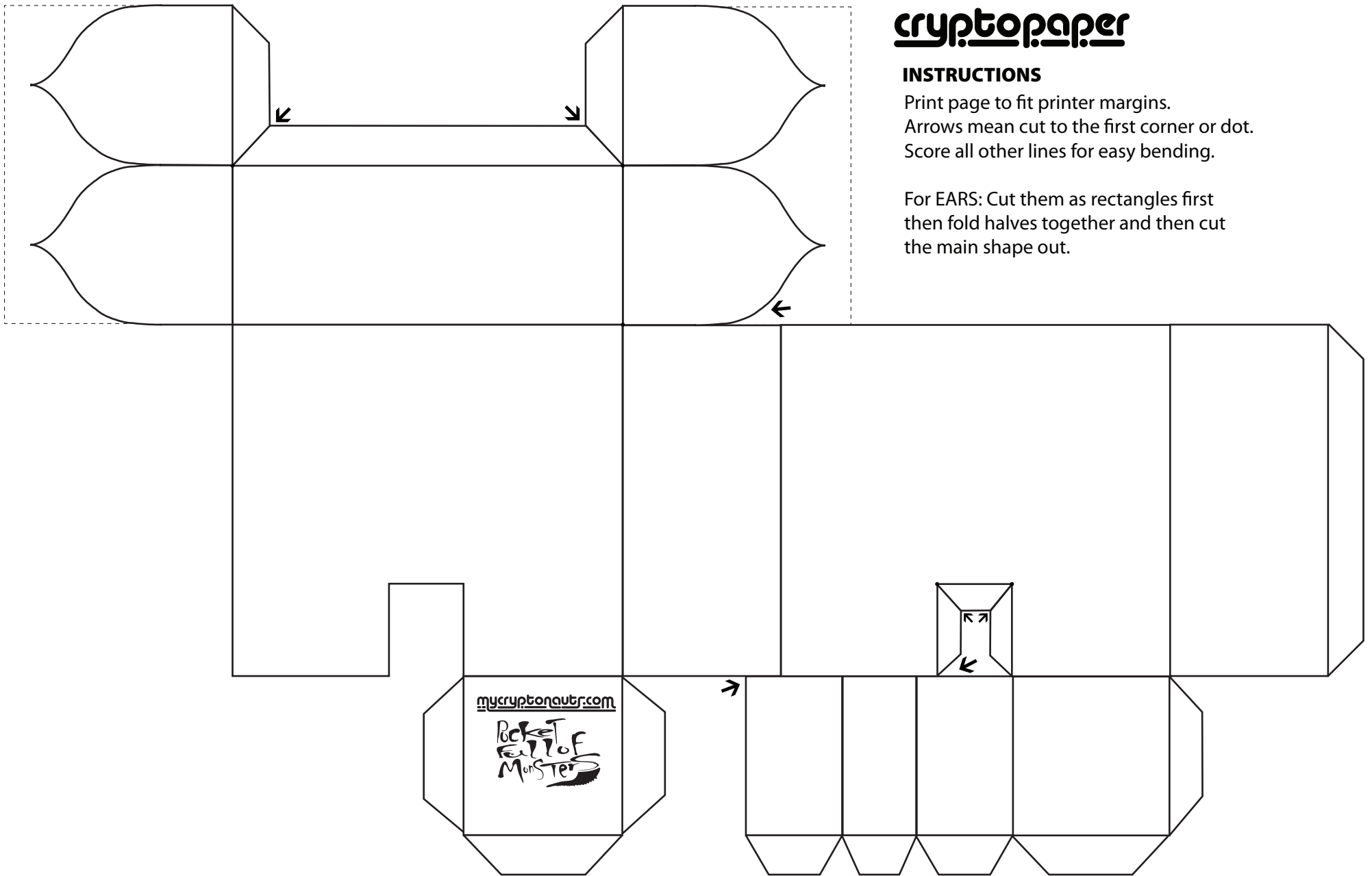


INSTRUCTIONS

Print page to fit printer margins.
Arrows mean cut to the first corner or dot.
Score all other lines for easy bending.

For EARS: Cut them as rectangles first
then fold halves together and then cut
the main shape out.



↑ LOGOS

Please leave logos.
Feel free to add yours to it.

↑ INSTRUCTIONS

Cut from arrow straight
across to the other arrow.